

CLARITY

Rural life is becoming more tempting, city life less so. Simple values are simply valuable.

Manufacturing geographically close to the end user is being discovered as an advantage sympathetically altering our way of life.

Environmental matters have finally become concerns that are dealt with automatically when a new invention or product is conceived.

Likewise it's not acceptable to cheat with Corporate Social Responsibility content anymore – it's too risky because the consumer is a hard judge.

Humanizing the mass-manufactured product on one side; reaching our limit of personalizing all products on the other side. Wouldn't it be nice if products were so good that we didn't feel the need to alter them.

Even though the new minimalism is about editing, applicability and relevance, there must be room left for wit.



Faint shadows appearing through discrete cloudy hues

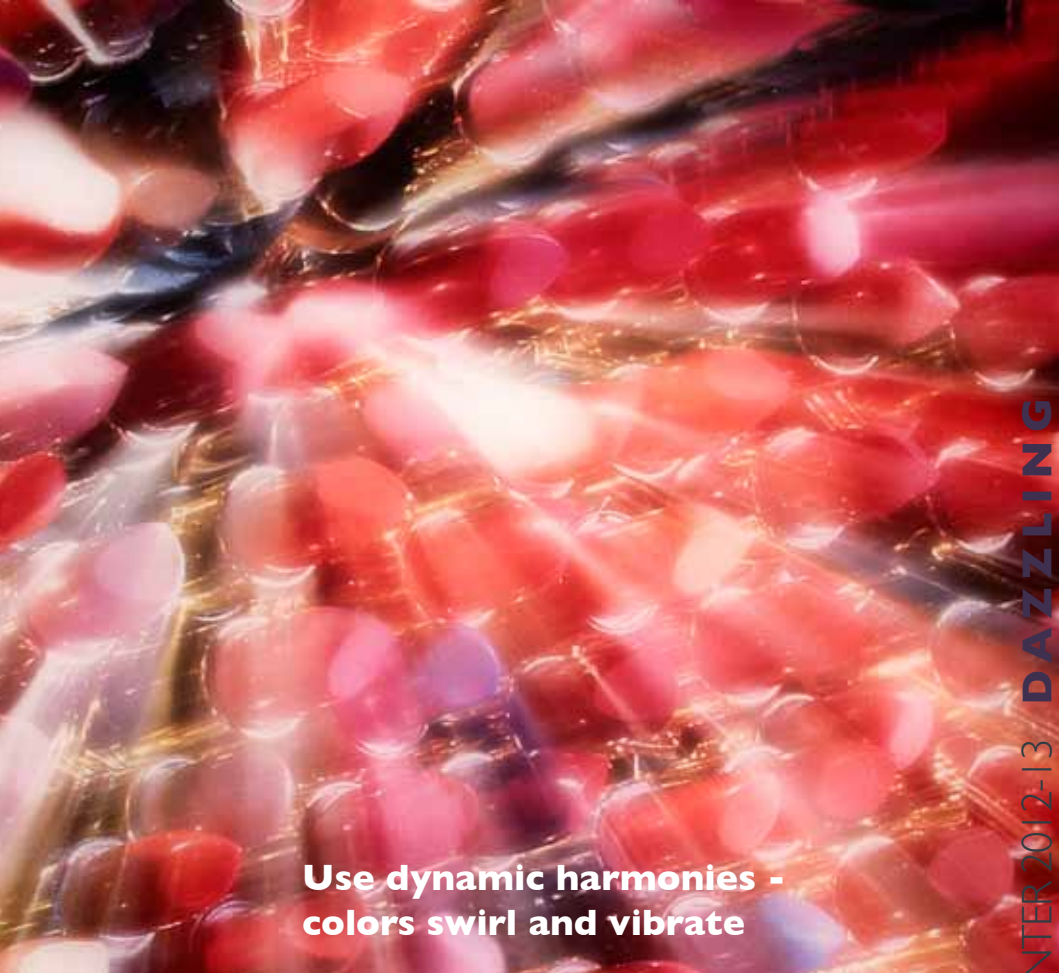
horn	bois de rose	chinchilla	thistle	greige	fuego	lead	mousseline
12-0605 TPX	16-1511 TPX	16-5803 TPX	16-3304 TPX	17-0808 TPX	15-0751 TPX	19-3905 TPX	11-4301 TPX



Jerseys as comfortable as second skin - with a natural handle. Lightweight warm textiles bonded of Tencel and wool, or woven of understated textured yarns. Brushed air-lightweight mohair fabric.

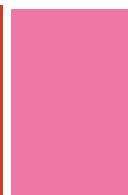
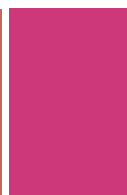


Subtle effects and surface structures: lace, cloqué jerseys and pleats, fluid velvet, jacquards in bouclé and other fantasy yarns. Pile is renewed by foil coating and cracking surface.



**Use dynamic harmonies -
colors swirl and vibrate**

- | | | | | | | | |
|------------|------------|------------|------------|------------|------------|------------|------------|
| tanager | cyclamen | cadet | taos | rossetto | confetto | kelly | sapphire |
| 17-1540TPX | 18-2436TPX | 16-4109TPX | 16-1054TPX | 18-1561TPX | 16-2124TPX | 15-5728TPX | 19-3720TPX |





Precious materials – silk, mohair, cashmere, angora, fine micron wools and the finest MicroModal yarns – are in play to add depth to the passionate blast. Feather light felts and flannels. Pied-de-poulé and Prince of Wales checks, enriched by blurred edges, with magnificent touch. Full-fat satins and crepe-de-chine.

Sparkle - lustrous - radiant - flashing
it's striking

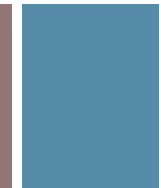
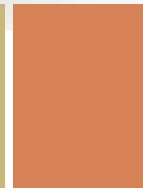
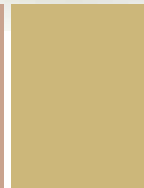
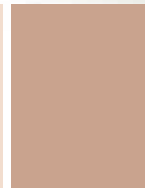
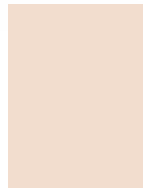


AUTUMN / WINTER 2012-13 **DAZZLING**



The enduring, the simple and the modest are the citadel of beauty

- lemon curd 12-0826TPX
- marsh-mallow 12-1107TPX
- toffee 15-1316TPX
- fudge 14-1025TPX
- antelope 16-1337TPX
- coffee blends 17-1510TPX
- della Robbia blu 17-4123TPX





Simple and unambiguous – a poetic minimum.
A refined and perfect touch of color is completing the
equilibrium sensation.

Layers of tulle-like fabrics
in wool and silk
fabric as caressing as butter
mixed with stiffer ones.

Micro patterned compact
knitted jacquard
all delicate and delightful.



Humility leads to strength and a higher kind of self-respect

chamois
13-1031 TPX

truffle
19-1034 TPX

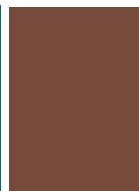
ottanio
19-4517 TPX

mordore'
19-1431 TPX

bottle
18-5315 TPX

moreed
19-1241 TPX

blackwood
19-0712 TPX





Graphic prints and inserts are valuable effects to up and move the look, to make it simply modern.



Work wear, uniforms, blankets.....Canvas and muffled felts, double face fabric, bee-wax water-repellent: wool in blends with cotton and linen to craft a blunt handle and an authentic appearance. Breathability and other comfort- increasing achievements are implemented – of course.



Illuminate the darkness, a visual drama

armagnac
18-1449 TPX



gainsboro
19-1627 TPX



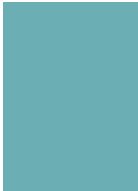
rothko
19-4039 TPX



nightblue'
19-3938 TPX



verdigris
15-4715 TPX



nightgreen
18-4522 TPX



lava
19-0608 TPX





In this area the technological accomplishments are brought into play: synthetic lightweight fabrics reminding you of classic suiting; fake suede for shirting and dresses; textiles holding performance qualities.

Notice the beauty of seamless garments.



Prints with pixelated photographic effects – in huge scale rapport.
Garments are like polished shells obtained by PU coatings,
calendared, finishing, etc

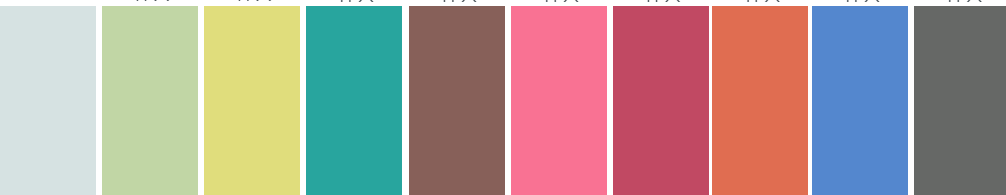
RESORT



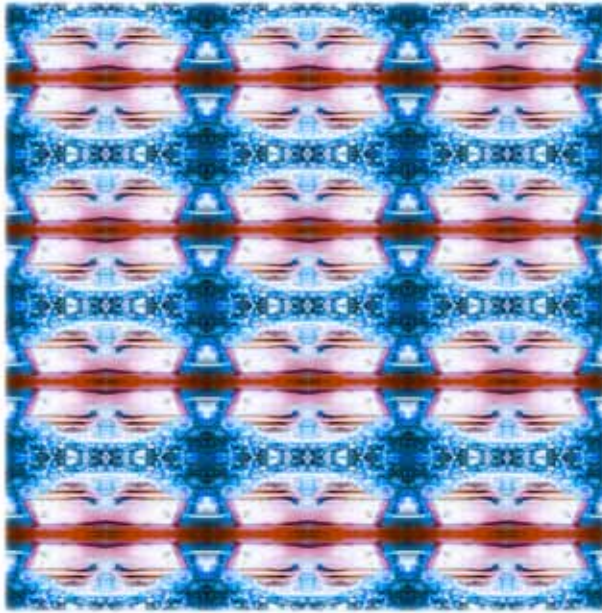
Laid back at ease
Bright shade
Utility styling
Lifestyle balance
Luminous
Savouring the
sunshine



lait de menthe	sorbet	cedro	seagreen	tamarind	flamingo	creme de cassis	persimmon	azurene	arbor
12-4305 TPX	13-0215 TPX	12-0633 TPX	16-5422 TPX	18-1421 TPX	16-1735 TPX	17-1740 TPX	16-1450 TPX	17-4041 TPX	18-0503 TPX



AUTUMN / WINTER 2012-13 **RESORT**



Fluid wrapping modal fabrics, feather-light jersey and open knits, old-school cotton shirting, tight jacquard knits – a mix of modern and classic style, tastefully under-acted - with a slight hint of sport. Comfort is the biggest issue – of course – consider stretch fabric.

Print-patterns arousing curiosity. Digital print with an easy, non-committing characteristic. Print on jersey and on finished knitted garments – adding distortion to the pattern when you wear the garment.

